



## MC-Fastpack

The compact injection and adhesive system –  
versatile, economical and good to go

EXPERTISE  
INJECTION SYSTEMS



# The MC-Fastpack System

## Your reliable compact solution

Injection and adhesive bonding jobs occur in many forms in both new construction and refurbishment works. These are often relatively small jobs for which the use of major machinery would be uneconomical. System agility also brings major advantages when it comes to dealing with areas of poor accessibility.

### Ready for use – any time

The MC-Fastpack system offers you high-quality and economical solutions for a wide range of applications. The system can be quickly and flexibly deployed anywhere by just one person with a portable compressor – even where space is tight.

The injection and adhesive materials are perfectly mixed and immediately processed with ideal properties in a single workstep. Complementing the system, MC also offers a range of special bore and adhesive packers. With MC-Fastpack you save time, material and labour costs. It's the ideal solution for any site.

- Compact system
- Immediately ready for use
- Mixing and processing in a single workstep
- No loss of material
- No cleaning work



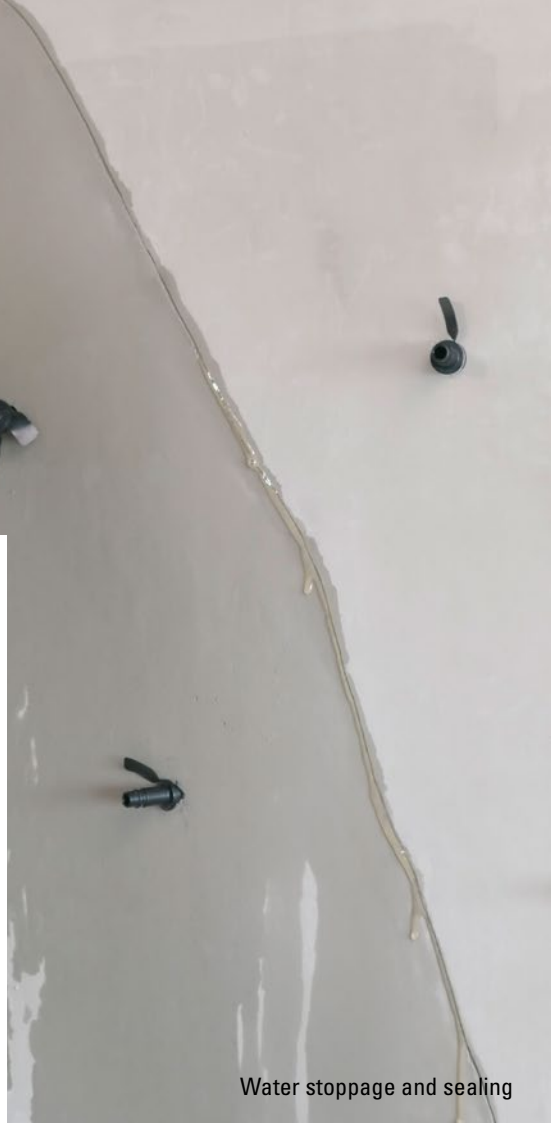
MC-Fastpack  
Power-Tool  
scope of delivery



### Material-efficient

The MC-Fastpack system essentially comprises the pneumatic dispenser MC-Fastpack Power-Tool and highly effective reactive resins packed in double-chamber cartridges. The two resin components remain separate until they meet in the mounted static mixer. This means that the cartridges can be resealed for use another day at another location and for any number of applications.

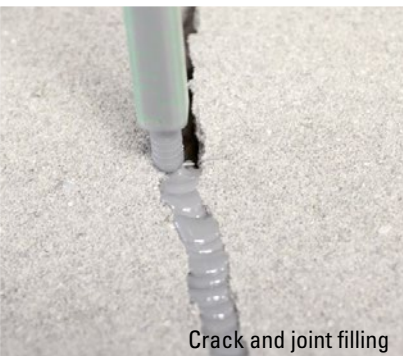




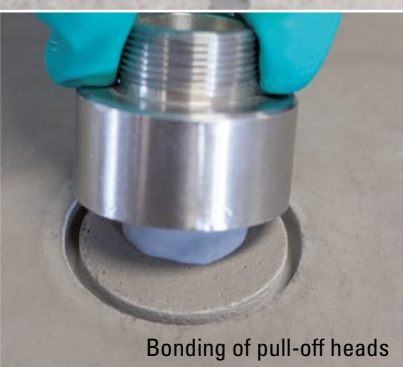
Water stoppage and sealing

Our reactive resins in system cartridges	Rigid injection	Water stoppage	Sealing of cavities and joints	Coating and reprofiling	Bonding
MC-Fastpack 1264 compact	● <sup>1)</sup>			●	●
MC-Fastpack 2300 top		● <sup>2)</sup>	●		
MC-Fastpack 2700	● <sup>1)</sup>	● <sup>1)</sup>	●		
MC-Fastpack Injekt LE	● <sup>3)</sup>	● <sup>3)</sup>	●		
MC-Fastpack PU solid	● <sup>3)</sup>		●	●	●
MC-Fastpack EP solid	● <sup>3)</sup>		●	●	●
MC-AnchorSolid E820	● <sup>3)</sup>		●	●	●

<sup>1)</sup> > 0.3 mm   <sup>2)</sup> > 0.1 mm   <sup>3)</sup> > 1.0 mm



Crack and joint filling



Bonding of pull-off heads



Bonding of anchoring devices



Force transmitting filling

## **MC-Fastpack**

### **Injection and adhesive systems for general usage**

- Rigid injection
- Water stoppage
- Sealing of cavities and joints
- Coating and reprofiling
- Bonding

MC-Bauchemie Müller GmbH & Co. KG  
Infrastructure, Industry & Buildings  
Am Kruppwald 1-8  
46238 Bottrop, Germany

Phone: +49 2041 101-190  
Fax: +49 2041 101-188

IN@mc-bauchemie.com  
www.mc-bauchemie.com



**BE SURE. BUILD SURE.**

Contact details

